

WELCOME TO ŠIAULIAI

2026-2027 a.y.



LITHUANIA



Lithuania, country of northeastern Europe, the southernmost and largest of the three Baltic States. Siauliai is also called ‘The city of the Sun’. Visitors and local people can explore many cultural and historical places in the region. There are museums, old estates, hills, more than 20 traditional homesteads, natural monuments and parks in the region.

ŠIAULIŲ VALSTYBINĖ KOLEGIJA

● Šiaulių valstybinė kolegija / Higher Education Institution offers practical and career focused studies. Here you don't just learn theory you gain real-life skills!

The institution offers more than 20 study programmes in:

- Business
- IT
- Engineering
- Social Sciences
- Health Sciences

Students can earn a Bachelor's degree and a professional qualification based on applied scientific research.

In short, it's a place where education meets real-world experience and helps you prepare for your future career.



ATTENDANCE / MARKS / GRADING SYSTEM

ERASMUS + STUDIES

CHANGE COURSES → WITHIN 2 WEEKS

GET YOUR SCHEDULE FROM YOUR COORDINATOR

FINAL GRADE → ATTENDANCE+ASSIGNMENTS
+EXAMS



ERASMUS + INTERNSHIP

Change Learning Agreement



Within 2 weeks

Evaluation



Attendance+
Performance+ Tasks

After Internship



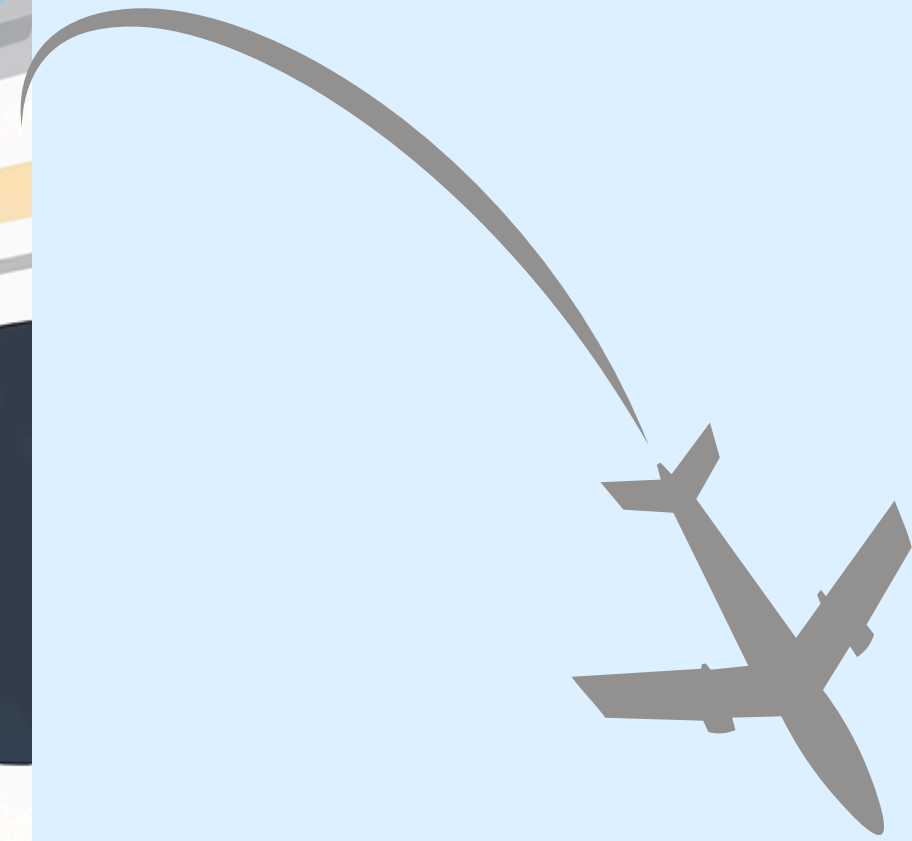
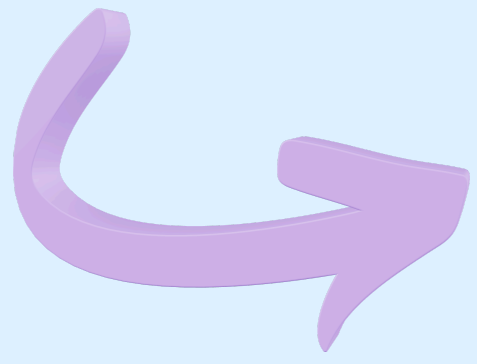
Certificate +
Transcript



ATTENDANCE / MARKS / GRADING SYSTEM

ECTS GRADE	PERCENTAGE	GRADE	
A	100-96	10	PASSED
B	95-86	9	PASSED
C	85-76	8	PASSED
D	75-66	7	PASSED
E	65-61	6	PASSED
E	60-46	5	PASSED
FX	45-36	4	FAILED
FX	35-26	3	FAILED
F	25-16	2	FAILED
F	15-0	1	FAILED
NP	NOT PARTICIPATED		

SO, HOW CAN I GET TO ŠIAULIAI



The nearest airports to Šiauliai:

1. Riga International Airport (RIX), Latvia:

Riga Airport (RIX) is 137 km. from Šiauliai. You can reach Šiauliai with Ollex buses. The Ollex buses will take you directly from the Riga Airport to Šiauliai bus station.

• To get an Ollex bus ticket from Riga Airport to Šiauliai follow this link:

<https://www.ollex.lt/en/express/Riga-airport/buy-a-ticket/Riga-airport-Siauliai>

2. Kaunas International Airport (KUN), Lithuania:

Kaunas Airport (KUN) is 145 km from Šiauliai. You can reach Šiauliai by bus or train. However, to reach Kaunas Bus Station or Kaunas Train Station from Kaunas Airport you will have to use taxi services or public transport.

You can buy a bus or train ticket to Šiauliai at the station or on the Internet:

· To get a bus ticket follow this link:

<https://www.autobusubilietai.lt/en>

· To get a train ticket follow this link: <https://bilietas.ltglink.lt/>



3. Vilnius International Airport (VNO), Lithuania:

Vilnius Airport (VNO) is 216 km from Šiauliai. You can reach Šiauliai by train or bus, however, to reach Vilnius bus station or Vilnius train station from Vilnius airport you will have to use taxi services. We suggest using the Bolt taxi app (it will be simpler and cheaper). Even if you don't have your ISIC card physically with you, you can show the online version on phone and get a discount on tickets.

You can buy bus or train ticket to Šiauliai at the station or on the Internet:

· To get a bus ticket follow this link:

<https://www.autobusubilietai.lt/en>

· To get a train ticket follow this link:

<https://bilietas.ltglink.lt/>

NOTE! Please pay attention, that there are no night routes (train or bus) !!!
In case of late arrival to Vilnius – please take care of the accommodation in the city. And safely board the chosen transportation the next day.

GETTING AROUND THE CITY AND COUNTRY

Railways

You can reach the capital of Lithuania and other major cities using the railway system. It is also possible to use this means of transportation to reach Poland, Latvia, etc.

For more information, you can visit:

<https://www.litrail.lt/en/home>.



Bus routes

Šiauliai is in a very comfortable position for reaching Latvia, Poland, Germany and other countries. For more information about bus routes check at: <https://www.busturas.lt/lt/>.

Residents in Šiauliai City use e-card to get around by bus. You can get this card at the Central Bus Station (address: Tilžės str. 109, Šiauliai LT-77159). The card is pre-paid, so you will have to add additional money everytime it is empty. Residents in Šiauliai city also use the app el.Bilietas Šiauliai , you get this app from the app shop in your phone.

You can find all bus timetables by clicking on the following link:

<http://www.stops.lt/siauliai/test.html#bus/en>

The detailed information on how to use the app is “El.siauliaibus.guide” document.



Driving

If you want to drive a car you must have a driver's license. Usually, the traffic is not very heavy in Šiauliai. Rush hours in the morning are from 7 a.m. till 9 a.m. and in the evening from 4 p.m. till 7 p.m. **The traffic is on the right side!**

Bicycle rent

You may see a lot of people driving the bicycle and not the car. Enjoy the beautiful weather by going everywhere by bike!

You can rent the bicycle at: the Šiauliai Tourism Information Center, Vilniaus Str. 213.

Bolt scooters rent

You may see a lot of people using scooters. Enjoy the beautiful weather by going everywhere using a cooter! For more information about Bolt scooters and where to find them: <https://bolt.eu/en-lt/scooters/>

You must use a helmet!

Bolt taxi

Bolt taxi is a great way to get around in Šiauliai city.



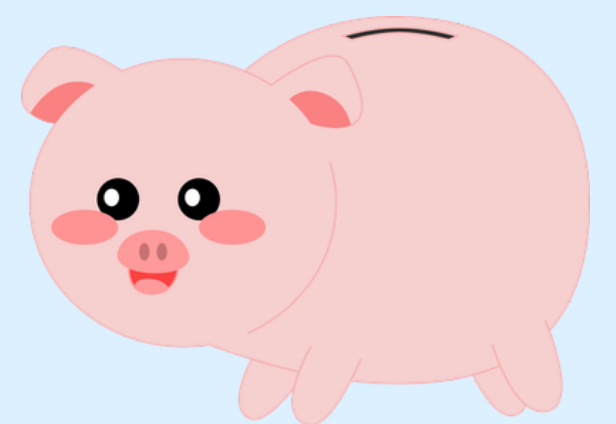
ACCOMMODATION



Exchange students are accommodated on their demand at Šiauliai valstybinė kolegija students dormitories – M. K. Čiurlionio g. 20, Šiauliai. The dormitory is fee paid on the 2nd floor of the Central Building.

The price for a month: is 130 Eur / person.

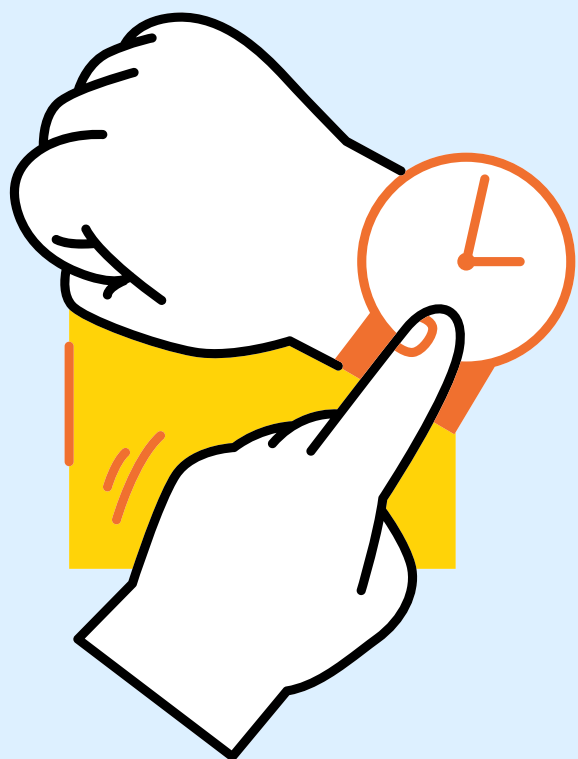
NO SINGLE ROOMS.



More information about the dormitory: <https://svako.lt/en/accommodation-4>



WORKING/ CONSULTING HOURS/ CONTACTS



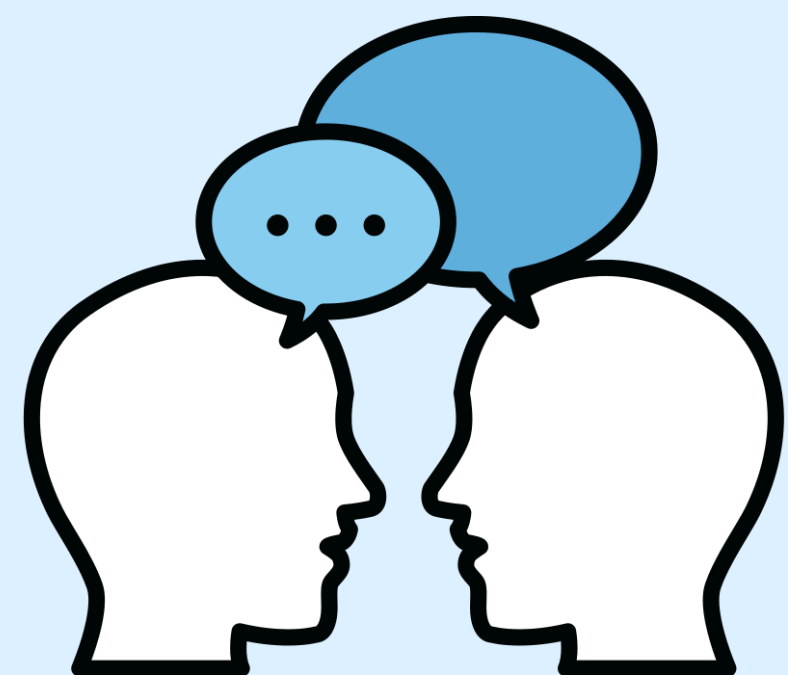
Working hours

I-IV: 08:00-17:00 (Lunch Break: 12:00-13:00)
V: 08:00-15:45 (Lunch Break: 12:00-13:00)

Consulting hours

Consulting hours are dedicated to Erasmus+ students. During these hours you can come to chat, solve a problem etc. with your coordinator.

I-IV: 13:00-15:00
V: 09:00-11:00



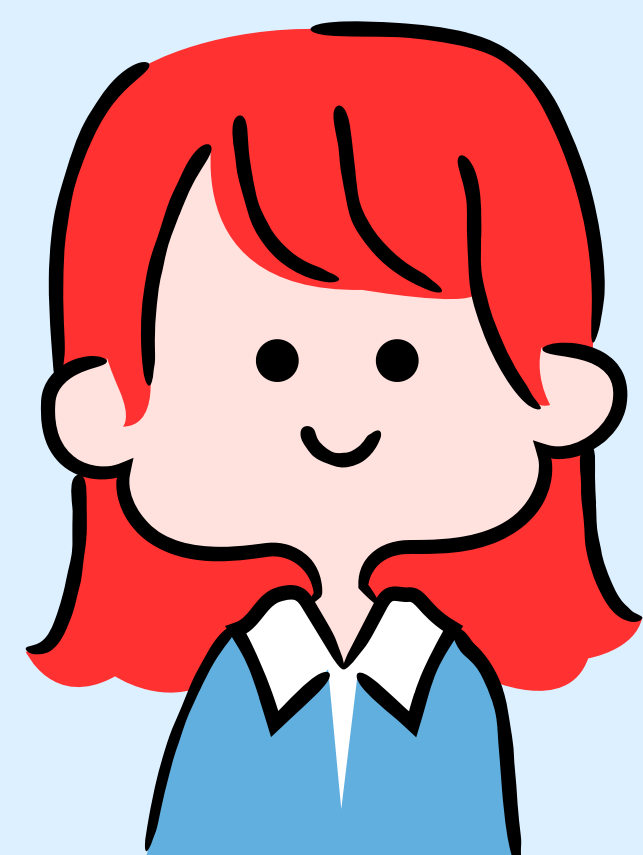
Head of International Relations Office / Institutional Coordinator

Eglė Lingaitienė
tarptautiniai.ryšiai@svako.lt

International Relations Coordinator

Guoda Augulienė
iro@svako.lt

Incoming students,
incoming staff



IMPORTANT DAYS IN LITHUANIA

Official dates when our institution is **closed**.

November 1st	All Saint's Day
November 2nd	Day of Remembrance for the Dead
December 24th	Christmas Eve
December 25-26th	Christmas
January 1st	New Year's Day
February 16th	Independence Day
March 11th	Day of Restoration of Independence
March 28-29th	Easter
May 1st	International Labour Day
June 24th	Midsummer Day

PLACES TO VISIT IN SIAULIAI

Museums are **free every last Sunday of the month.**

Here are the list of museums, you will be able to visit for free in Šiauliai on the last Sundays of the month:

More information about the places to visit in Siauliai: <https://www.visitsiauliai.lt/en/sightseeing-places/>



Šiauliai Cathedral of the Apostles

St. Peter and St. Paul

Address: Aušros str. 3

St. Peter and Paul s Cathedral is the most impotant and famous building in the city. It was a church until 1997.

The cathedral is very tall (aprox. 70 meters) so it can be seen from many places in the city. It is located in the city centre on the site on the first wooden church of Siaulia.



Iron Fox

Address: The southern shore of Lake Talkša, Šiauliai

The Iron Fox, designed by V. Purnas, has stood near Lake Talkša since 2009. It is recorded in Lithuania's Book of Records that it is the largest animal sculpture: its weight is nearly 7 tons, length is about 15 meters and height is 6,6 meters.

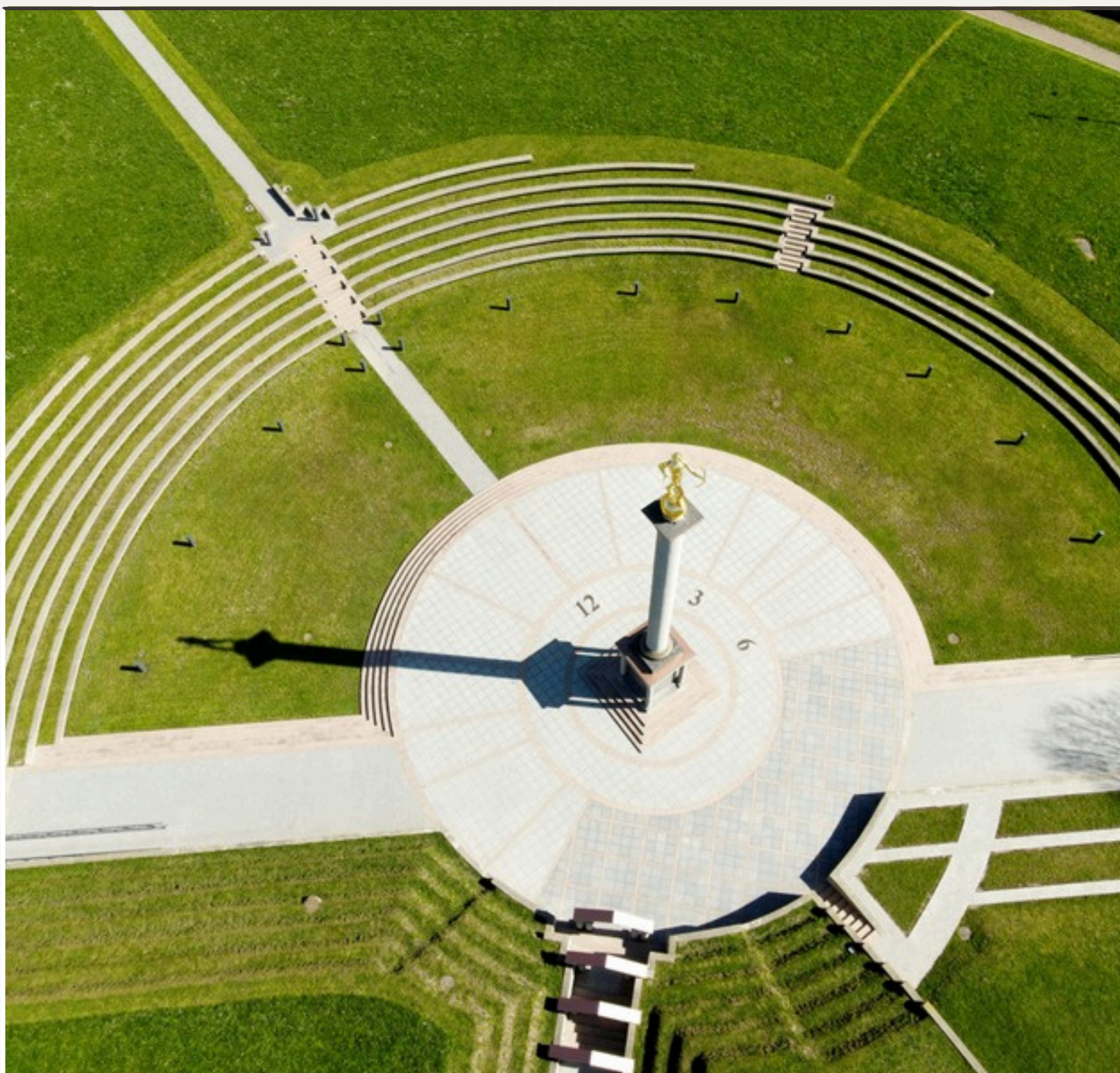


The shore of Lake Talkša is simply created for active recreation; here you will always find what to do: jogging and cycling trails, Wakeboarding Park FoxSpot, the Equestrian Centre operating in the Centre of Young Naturalists



Talkša lake

Address: The southern shore of Lake Talkša, Šiauliai



Sundial Square

Address: Ežero St.

The main idea of the square is to show the three most important symbols of Siauliai: the Sun (remembering the Battle of the Sun), the Archer (Saulys), which is connected to the city's name, and the passage of time since the city was first mentioned. It is the highest sundial in Lithuania.



The sculpture "The Archer" is a symbol of Siauliai. Local people call it the "Golden boy" or the "Small Archer." The four meter high sculpture is covered with 1.900 thin sheets of gold foil.



Golden boy

Address: Šalkauskio St.

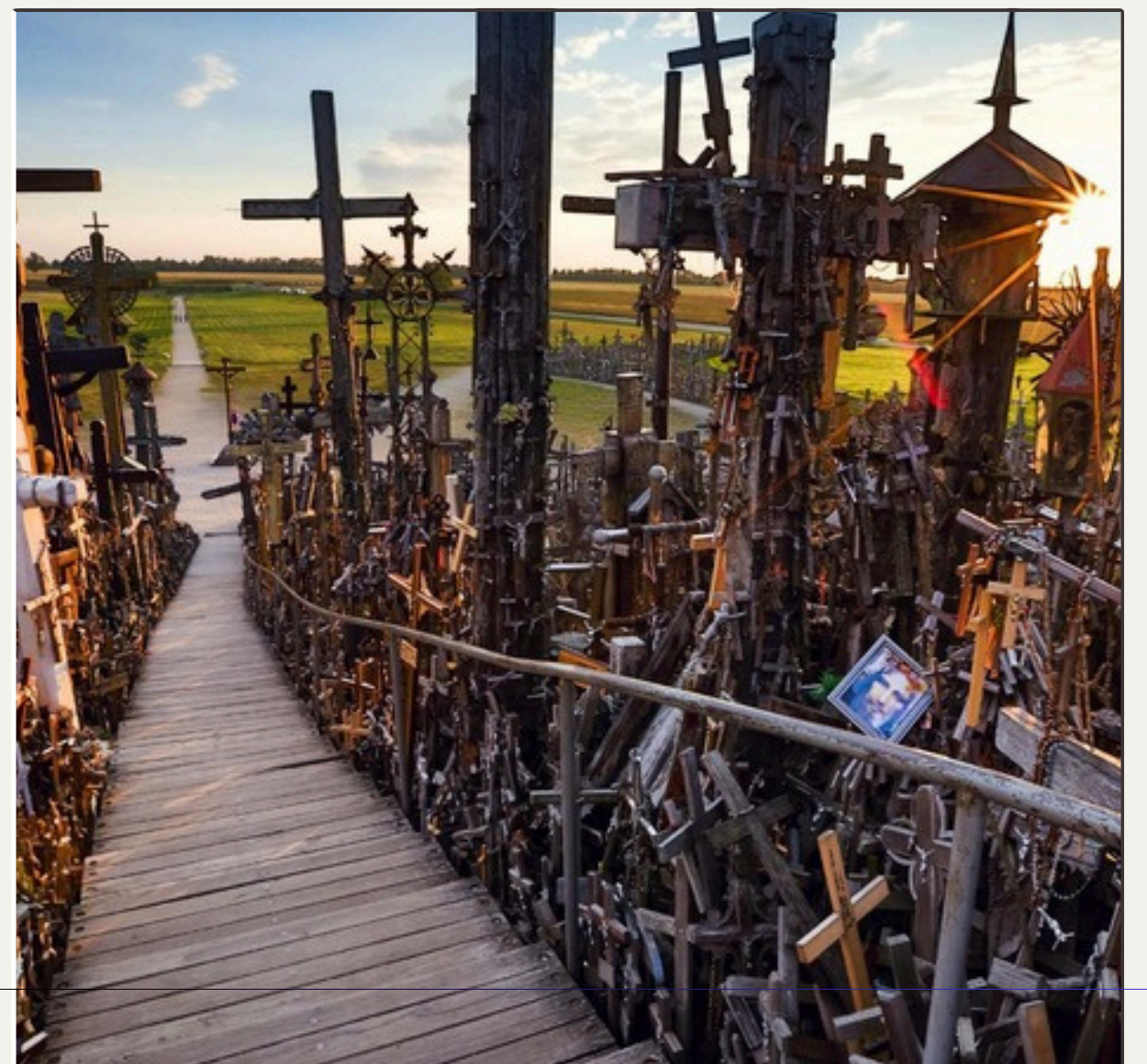


Šiauliai Boulevard
Address: Vilniaus str.



In 1975, we were brave: the third in Europe (after Rotterdam in 1972 and Erfurt in 1973) and the first in Lithuania who turned the central part of Vilniaus Street (1,28 km from Žemaitės Street to Draugystės Avenue), which belonged to vehicles, into a boulevard. Šiauliai Vilniaus Street, like Tilžės Street, built in the 18th century, is a historical road leading from the east to the west; while Tilžės Street, from the south to the north.

In the Middle Ages, there stood a wooden castle on this hill, called Kula in the chronicles. It was destroyed by the Livonian army in 1348. For many years, the hill called Pilis, Maldavimai, Jurgaičiai, Domantai Mound, stood bare. Local people told that the first crosses had been built in the middle of the 19th century, praying God for grace and health, because people considered this hill to be a holy place. Others claimed that it was started to build crosses to remember those who were killed in the uprisings of 1831 and 1863 against the Tsarist Russia. After suppressing the uprising, the occupation authorities prohibited construction of crosses and destroyed the already built ones. Now It has about 100 000 crosses.



Hill of Crosses
Address: Piliakalnio str. 7,
Domantų village